

Covid-19 update

HEALTH & SAFETY

at  **nurseries**
BY GYMFINITY KIDS



Safety on arrival

You will see **2-meter stickers** on the floor outside, please queue using this guide until welcomed in by our team.

We ask that **only 1 adult** brings their child to the nursery. Only one child may enter the nursery at a time.

Hand sanitiser stations will be fixed to the wall inside the main nursery door.



Temperature check

Before entering the nursery, a member of our friendly team will carry out a **non-contact temperature check** wearing PPE, including a face mask.

If any children have a temperature higher than 38 degrees C, they will be sent home and parents advised to self-isolate per **government guidelines**.



Handwashing

Next, children will be asked to **wash their hands** in the bathroom before continuing into the room.

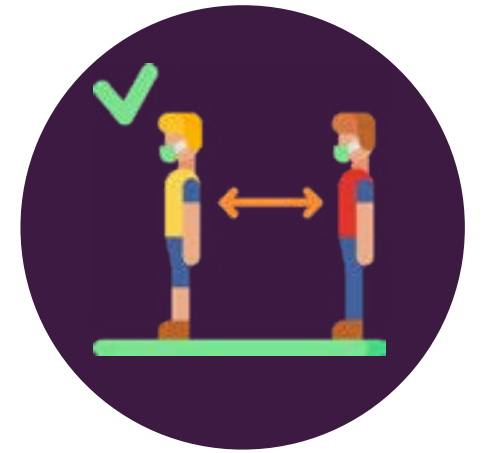
Then again at regular times during the day our team will be encouraging children to **wash their hands thoroughly** with soap and warm water.



Reducing crossover

Our morning session will finish at 1pm and our afternoon session will start at 1.15pm to **reduce crossover.**

When collecting your child, please **follow the same steps** upon arrival and avoid gathering in groups outside the doors.



Social distancing

Children will spend the day in **separate age groups**, with the same nursery nurses.

Mealtimes will be staggered and children have their own drinking cup, which will be replaced regularly.

No personal tours will be conducted during operational hours to reduce the number of people in the setting.



Cleanliness

Our team have **increased cleaning capacity** to keep our setting as **germ-free** as possible, fully cleaning and sanitising areas between different groups.

We have **removed** sand, playdough and water resources and will be rotating the use of soft toys which we **wash at a high temperature** overnight.



Covid-19 symptoms

As per the government guidelines, if your child or a member of your household displays any of the Covid-19 symptoms **stay at home.**

Please **do not** bring your child to the nursery.

Self isolate and follow the latest NHS advice:
www.nhs.uk/conditions/coronavirus-covid-19

FAQs



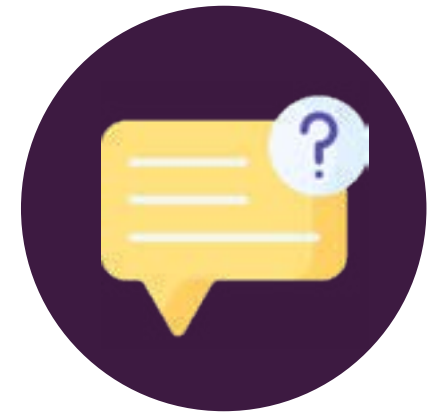
Q: Will you be conducting personal tours with other perspective parents throughout the day?

A: To reduce the number of people in our setting we will not be conducting any personal tours during operating hours.

Q: Are you supporting testing of your staff?

A: Testing is available for all key workers, which covers our team of childcare providers. Any team members wishing to access a test can do so.

FAQs



Q: If there is a confirmed case of COVID-19 in the nursery, will you tell us?

A: If there is a confirmed case within our nurseries of either a member of staff or child, we will advise you via email, whilst maintaining the confidentiality of all involved.

Q: Will you comfort my child if they are upset?

A: Of course. Social distancing must be carefully balanced with the emotional well-being of each child. If a child becomes upset at any time, we will comfort them as they need. No child will be left crying because of social distancing.

FAQs



Q: Will staff be wearing face masks or coverings?

A: The evidence to support the use of masks, or not, is limited. At nurseries by Gymfinity Kids our team who are taking temperatures will wear PPE and a face mask, which will be changed for each session of temperature taking. Consistent with government guidance, our team within the nursery room with children will not wear face masks during the day.

FAQs



Q: How will social distancing be respected in nursery?

A: We kindly ask all families to respect social distancing when arriving at nursery for drop off and collection, this is of particular importance when awaiting temperature taking.

Within a nursery social distancing is difficult with children, but we will support this by:

- carefully monitoring our occupancy
- avoiding the movement of children and staff between rooms or within communal spaces such as shared dining spaces
- only spending time in key groups separating children independently from other age groups
- staff will be carefully deployed within the nursery and only work with one age group, and as far as possible with their key children.